



OAKFIELD



Helmsman Rise, St. Leonards-On-Sea  
£1,200 Per Calendar Month



# SUMMARY

---

Situated on the top floor of a well-maintained purpose-built block in the popular St Leonards area, this modern apartment offers wide-reaching views across rooftops, greenery, and towards the sea and Beachy Head.

The property features a bright and spacious lounge/diner with a Juliet balcony, making the most of the open outlook. The kitchen is fitted with integrated appliances and sits open-plan to the living area, creating a practical layout.

There are two good-sized bedrooms, including a main bedroom with elevated views, along with a modern bathroom fitted with a shower over the bath.

Additional benefits include gas central heating, double glazing, a secure entry system, and an allocated parking space.

Located on the western side of St Leonards, the apartment is within easy reach of Hastings town centre, the seafront, transport links, and the nearby town of Battle.

Overall, a well-kept apartment in a convenient location.

Please note:

An annual household income of £36,000 will be required to meet the affordability criteria.

Available now.





**Kitchen**

10'11" x 8'5"

**Living Area**

15'7" x 12'4"

**Bedroom One**

15'7" x 12'9"

**Bedroom Two**

10'11" x 8'3"

**Bathroom**

6'3" x 5'8"

**Storage Cupboard**

**Council Tax Band B - £2,081.78 Per Annum**













# INFORMATION

---

## Local Authority

Hastings Borough Council

## Council Tax Band

**B**

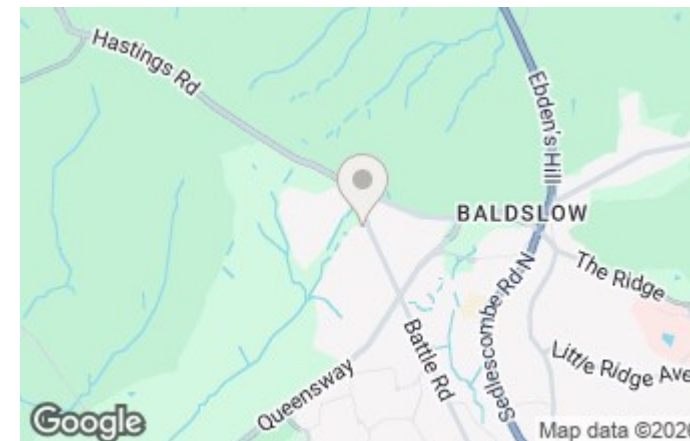
## Opening Hours

Monday to Friday	9.00am - 5.30pm
Saturday	9.00am - 4.00pm

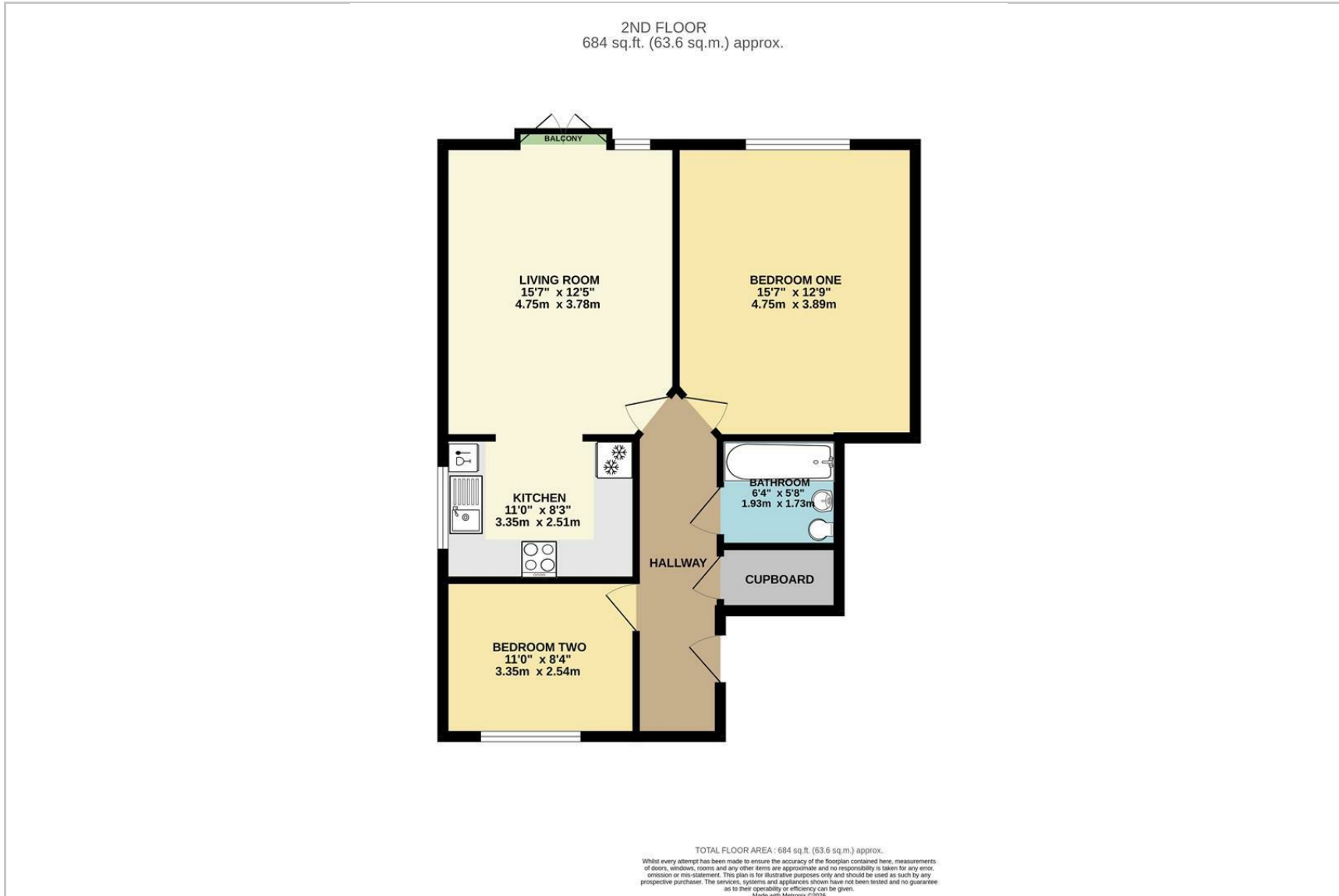
## Viewings

Please contact us on 01424 446644 if you wish to arrange a viewing appointment for this property or require further information.

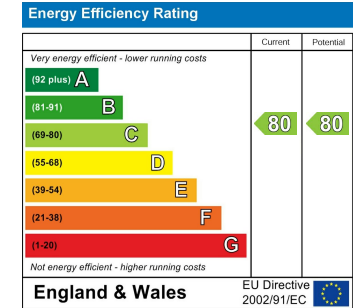
## Area Map



## Floorplan



## Energy Efficiency Graph



These particulars, whilst believed to be accurate are set out as a general outline only for guidance and do not constitute any part of an offer or contract. Intending purchasers should not rely on them as statements of representation of fact, but must satisfy themselves by inspection or otherwise as to their accuracy. No person in this firm's employment has the authority to make or give any representation or warranty in respect of the property.